

Ephrata Community Ambulance Association

Monthly Operations Report

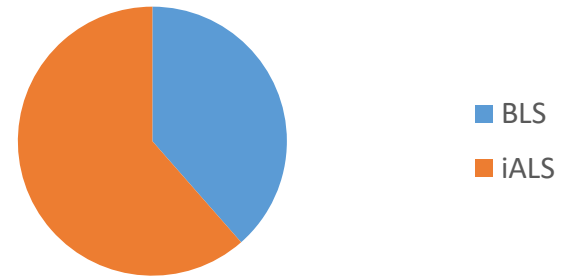
January 2025



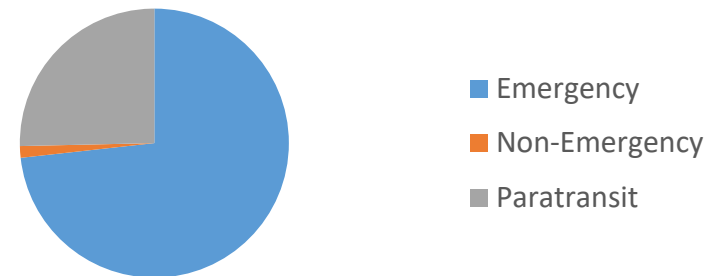
ECAA Combined Operations Report

Calls by Type	Quantity	%
Emergency	315	73.2
Basic Life Support	121	38.5
Intermediate Advanced Life Support	193	61.5
Did Not Transport	17	5.4
Call Canceled	42	13.4
Non-Emergency	6	1.4
Transports	6	100.0
Standbys	0	0.0
Paratransit	109	25.4
Total Calls	429	

Emergency Calls

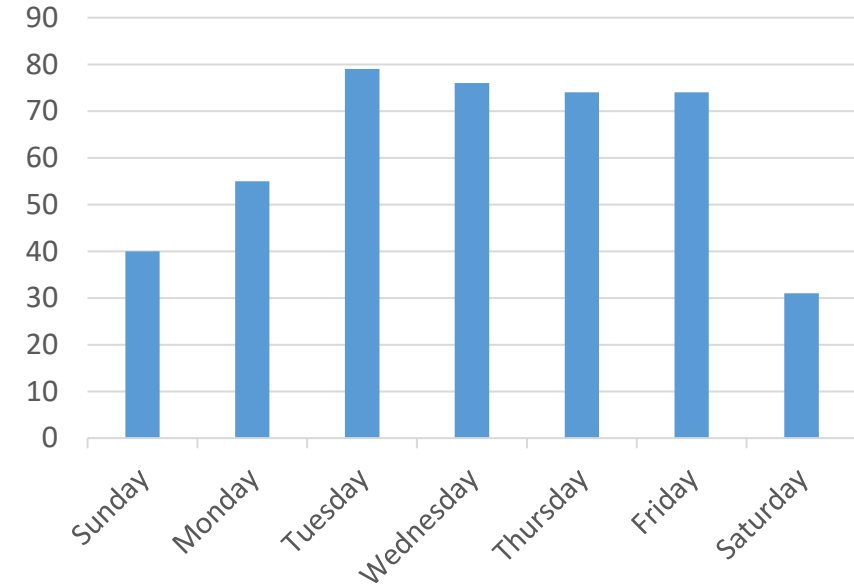


Calls by Type

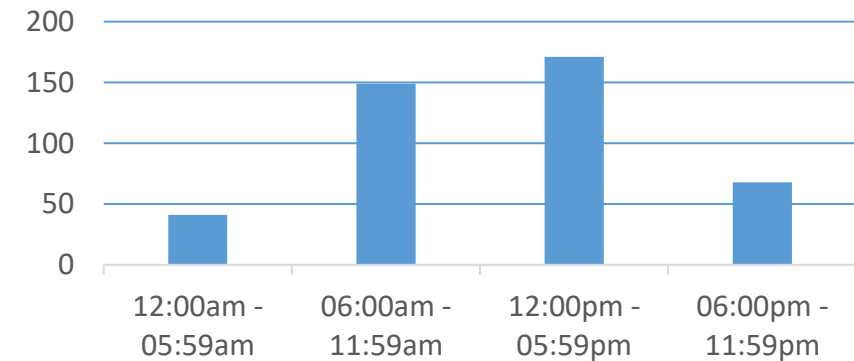


Time in Service = 389 hours and 34 minutes

Calls by Day of Week	Quantity	%
Sunday	40	9.3
Monday	55	12.8
Tuesday	79	18.4
Wednesday	76	17.7
Thursday	74	17.2
Friday	74	17.2
Saturday	31	7.2



Calls by Time of Day	Quantity	%
12:00am – 05:59am	41	9.6
06:00am – 11:59am	149	34.7
12:00pm – 05:59pm	171	39.9
06:00pm – 11:59pm	68	15.9



Call Locations by Municipality	Quantity	%
Akron Borough	22	5.1
Clay Township	22	5.1
Earl Township	4	0.9
East Cocalico Township	10	2.3
Ephrata Borough	206	48.0
Ephrata Township	126	29.4
West Cocalico Township	4	0.9
West Earl Township	15	3.5
Other	20	4.7

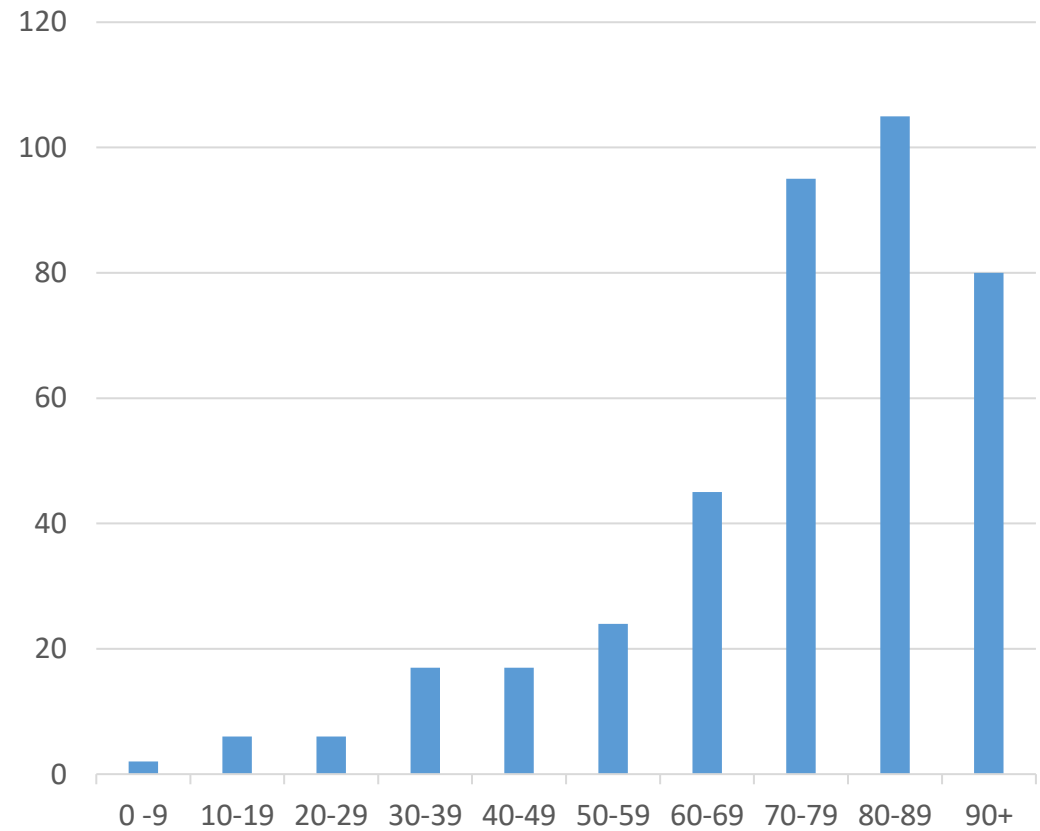
Ambulance Units	Mileage	%
Ambulance #1	309	9.6
Ambulance #2	1693	52.5
Ambulance #3	1221	37.9
Ambulances Total	3223	

Paratransit Vans	Mileage	%
Van #1	173	14.4
Van #2	185	15.4
Van #3	840	70.1
Vans Total	1198	

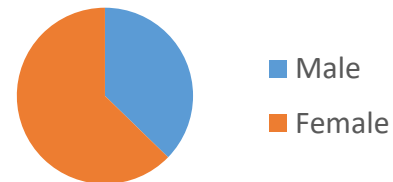
Squad Vehicle	197
----------------------	------------

ECAA Totals	4618
--------------------	-------------

Age of Patients	Quantity	%
Newborn – 9	2	0.5
10 – 19	6	1.5
20 – 29	6	1.5
30 – 39	17	4.3
40 – 49	17	4.3
50 – 59	24	6.0
60 – 69	45	11.3
70 – 79	95	23.9
80 – 89	105	26.4
90 and over	80	20.2



Gender of Patient	Quantity	%
Male	148	37.3
Female	249	62.7



Crew Structures	Quantity	%
Paid	394	91.8
Volunteer	5	1.2
Paid / Vol Combination	30	7.0

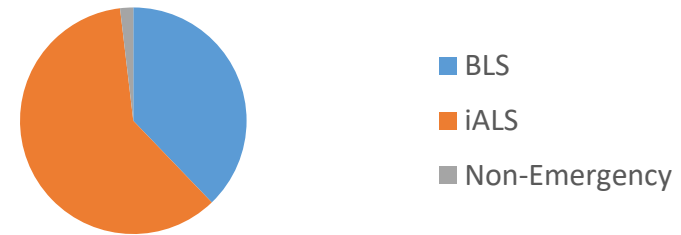


EMS Operations Report

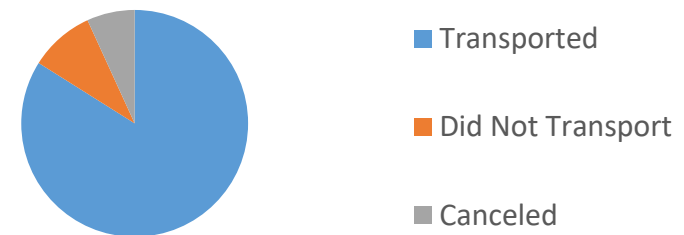


Calls by Type	Quantity	%
Emergency	314	98.1
Basic Life Support	121	38.5
Intermediate Advanced Life Support	193	61.5
Did Not Transport	17	5.4
Call Canceled	42	13.4
Non-Emergency	6	1.9
Transports	6	100.0
Standbys	0	0.0
Total Calls	320	

Calls by Type

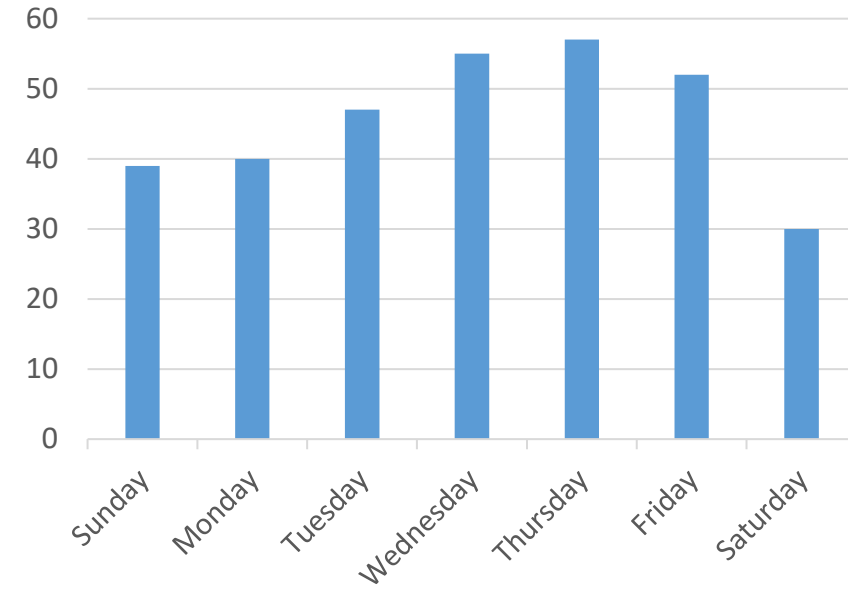


Emergencies by Transport Type

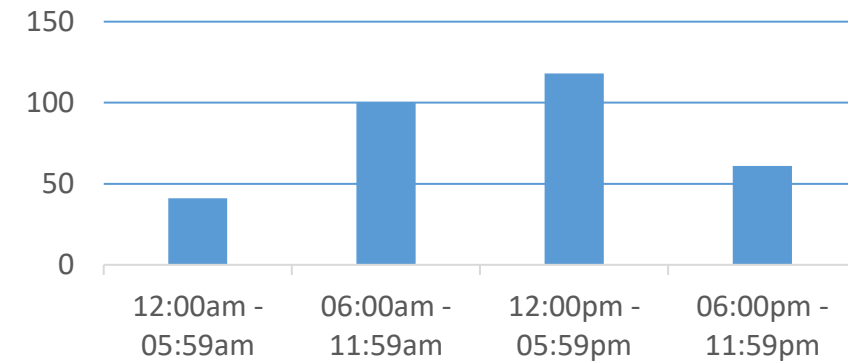


Time in Service = 301 hours and 11 minutes

Calls by Day of Week	Quantity	%
Sunday	39	12.2
Monday	40	12.5
Tuesday	47	14.7
Wednesday	55	17.2
Thursday	57	17.8
Friday	52	16.3
Saturday	30	9.4



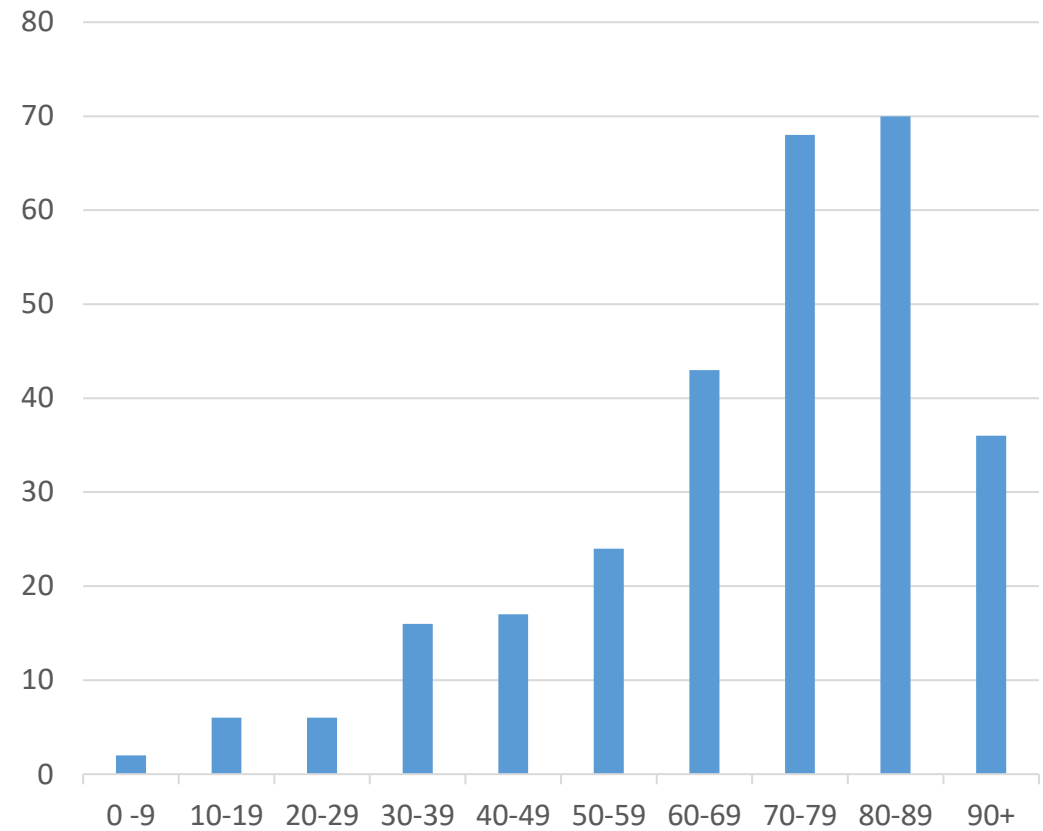
Calls by Time of Day	Quantity	%
12:00am – 05:59am	41	12.8
06:00am – 11:59am	100	31.3
12:00pm – 05:59pm	118	36.9
06:00pm – 11:59pm	61	19.1



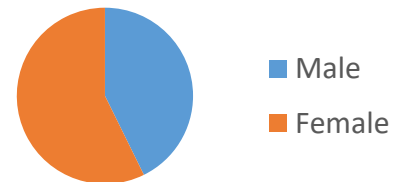
Call Locations by Municipality	Quantity	%
Akron Borough	22	6.9
Clay Township	21	6.6
Earl Township	4	1.3
East Cocalico Township	10	3.1
Ephrata Borough	154	48.1
Ephrata Township	90	28.1
West Cocalico Township	4	1.3
West Earl Township	12	3.8
Other	3	0.9

Call Locations by Location Type	Quantity	%
Residences	162	50.6
WellSpan ECH	6	1.9
Other Hospitals	0	0.0
WellSpan Urgent Care	2	0.6
LGH Urgent Care	9	2.8
Extended Care Facilities	86	26.9
Doctors Offices	7	2.2
Retail Stores	10	3.1
Other Businesses	9	2.8
Schools	0	0.0
Highways / Streets	24	7.5
Recreation Sites	0	0.0
Other Public Places	3	0.9
Other	2	0.6

Age of Patients	Quantity	%
Newborn – 9	2	0.7
10 – 19	6	2.1
20 – 29	6	2.1
30 – 39	16	5.6
40 – 49	17	5.9
50 – 59	24	8.3
60 – 69	43	14.9
70 – 79	68	23.6
80 – 89	70	24.3
90 and over	36	12.5



Gender of Patient	Quantity	%
Male	123	42.7
Female	165	57.3

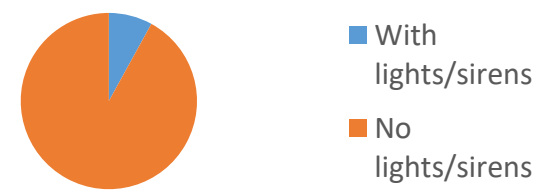


Ambulance Crews	Responses	%	Ambulance Units	Mileage	%
First crew	225	70.3	Ambulance #1	309	9.6
Second crew	92	28.8	Ambulance #2	1693	52.5
Third crew	3	0.9	Ambulance #3	1221	37.9
Ambulances Total	320		Total	3223	

Squad Vehicle	3	197
----------------------	----------	------------

EMS Totals	320	3420
-------------------	------------	-------------

Transport Modes	Quantity
With emergency lights and sirens	19
No emergency lights and sirens	197



Destination Hospitals	Quantity	%
WellSpan Ephrata Community Hospital	185	78.1
WellSpan Good Samaritan Hospital	0	0.0
WellSpan York Hospital	0	0.0
Lancaster General Hospital	35	14.8
Penn State Health Lancaster Medical Center	4	1.7
UPMC Pinnacle Lititz	2	0.8
Reading Hospital & Medical Center	5	2.1
Penn State Hershey Medical Center	0	0.0
Lebanon VA Hospital	0	0.0
Helicopter Landing Zone	0	0.0
Other	6	2.5

Calls Assisted by Paramedics	Quantity	%
Medic 04-10/20	119	87.5
Medic 04-30	6	4.4
Medic 04-40	6	4.4
Medic 85	5	3.7
Medic 86	0	0.0
Medic 82	0	0.0
Medic 06	0	0.0
Total	136	

Calls Assisted by Fire Departments	Quantity
Station 12 (Akron)	2
Station 14 (Durlach/Mt. Airy)	4
Station 15 (Ephrata)	15
Station 16 (Lincoln)	19
Station 19 (Schoeneck)	0
Station 29 (West Earl)	3
Station 35 (Farmersville)	2
Other Stations	7

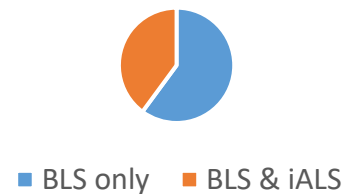
Calls with non-ECAA BLS units	Quantity	%
Assisting non-ECAA BLS units	1	0.3
Covering for non-ECAA BLS units	19	6.1
Assisted by non-ECAA BLS units	31	9.9
Covered by non-ECAA BLS units	1	0.3

Calls Assisted by Police Departments	Quantity	%
Ephrata PD	48	68.6
West Earl PD	12	17.1
Northern Lancaster Regional PD	3	4.3
East Cocalico PD	3	4.3
New Holland PD	3	4.3
PA State Police	1	1.4

Crew Structures	Quantity	%
Paid	286	89.4
Volunteer	4	1.3
Paid / Vol Combination	30	9.4

iALS Call Outcomes	Quantity	%
BLS Treatment	116	60.1
BLS & iALS treatment	77	39.9

iALS Call Outcomes



Type of Emergency	Quantity	%
Abrasion/Laceration	7	2.2
Burns	1	0.3
Cardiac Arrest	7	2.2
Cardiac Symptoms	13	4.1
Choking	2	0.6
CVA (Stroke)	6	1.9
Diabetic	7	2.2
Difficult breathing	42	13.4
DOA	0	0.0
Emergency transfer	0	0.0
Emotional problem	5	1.6
Fall victim	65	20.7
Fire call	7	2.2
Fracture/Injury	11	3.5

Type of Emergency	Quantity	%
Hemorrhaging	8	2.5
Maternity	0	0.0
MVA – Motorcycle	0	0.0
MVA – Cars/trucks	13	4.1
Nausea	20	6.4
Overdose	0	0.0
Pain	12	3.8
Pedestrian struck	1	0.3
Seizures	3	1.0
Syncope/vertigo	5	1.6
Unresponsive	15	4.8
Vomiting	20	6.4
Weakness	36	11.5
Other	8	2.5

Paratransit Operations Report

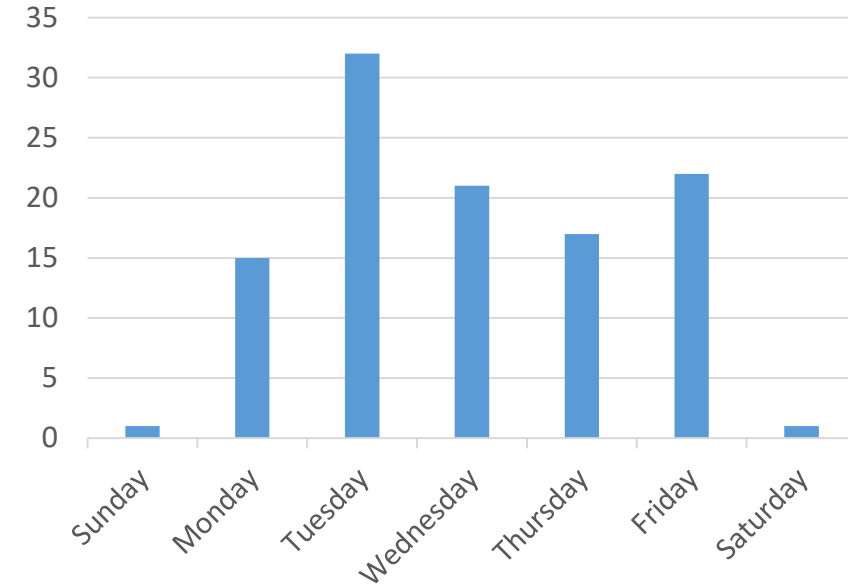
Paratransit Calls

109

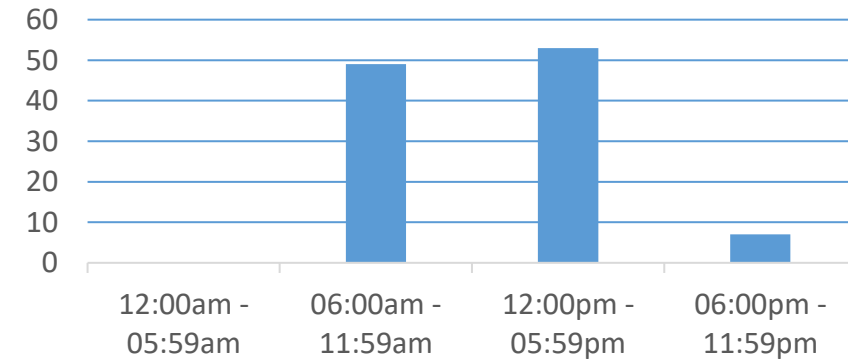


Time in Service = 88 hours and 23 minutes

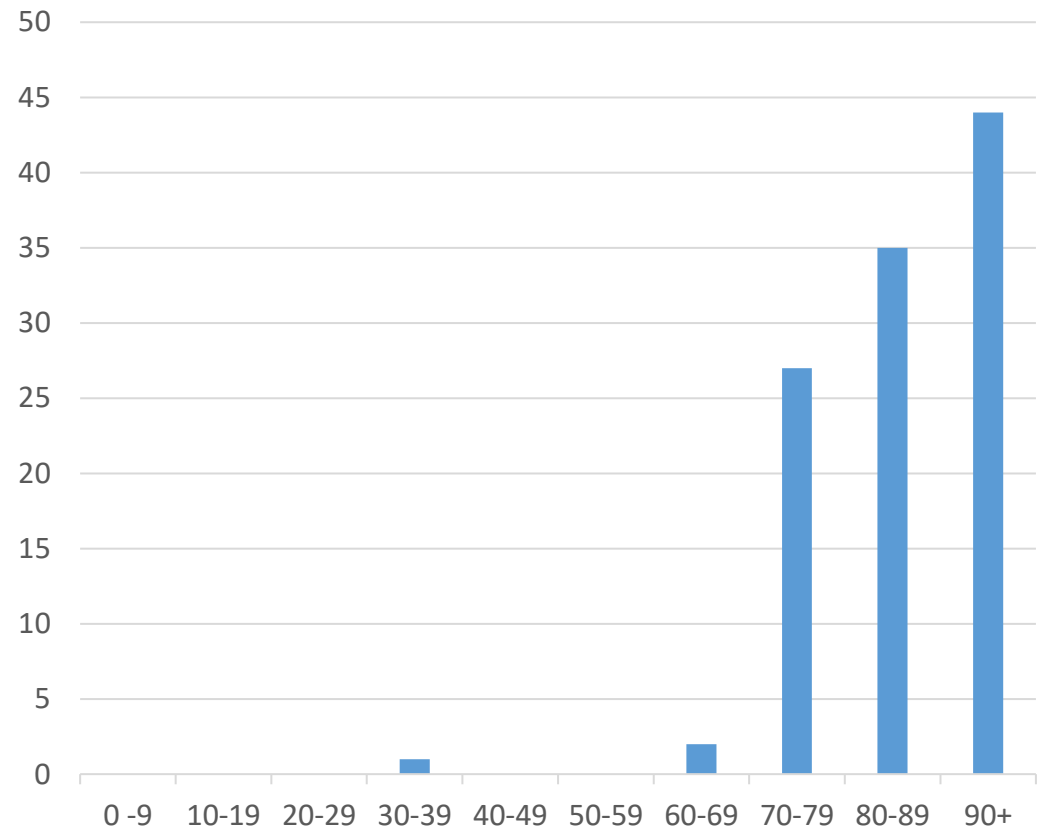
Calls by Day of Week	Quantity	%
Sunday	1	0.9
Monday	15	13.8
Tuesday	32	29.4
Wednesday	21	19.3
Thursday	17	15.6
Friday	22	20.2
Saturday	1	0.9



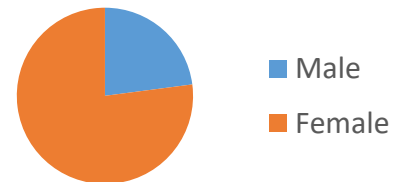
Calls by Time of Day	Quantity	%
12:00am – 05:59am	0	0.0
06:00am – 11:59am	49	45.0
12:00pm – 05:59pm	53	48.6
06:00pm – 11:59pm	7	6.4



Age of Patients	Quantity	%
Newborn – 9	0	0.0
10 – 19	0	0.0
20 – 29	0	0.0
30 – 39	1	0.9
40 – 49	0	0.0
50 – 59	0	0.0
60 – 69	2	1.8
70 – 79	27	24.8
80 – 89	35	32.1
90 and over	44	40.4



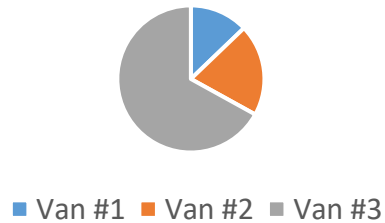
Gender of Patient	Quantity	%
Male	25	22.9
Female	84	77.1



Paratransit Vans	Calls	%	Mileage	%
Van #1	14	12.8	173	14.4
Van #2	22	20.2	185	15.4
Van #3	73	67.0	840	70.1
Vans Total	109		1198	

Call Locations by Municipality	Quantity	%
Akron Borough	0	0.0
Clay Township	1	0.9
Earl Township	0	0.0
East Cocalico Township	0	0.0
Ephrata Borough	52	47.7
Ephrata Township	36	33.0
West Cocalico Township	0	0.0
West Earl Township	3	2.8
Other	17	15.6

Calls by Vehicle



Crew Structures	Quantity	%
Paid	108	99.1
Volunteer	1	0.9
Paid / Vol Combination	0	0.0

Call Locations by Location Type	Quantity	%
Residences	5	4.6
WellSpan ECH	34	31.2
Lancaster General Hospital	5	4.6
LGH Health Campus	4	3.7
Other Hospitals	0	0.0
Extended Care Facilities	30	27.5
Doctors Offices	31	28.4
Other	0	0.0

ECF Origins/Destinations	Quantity	%
Ephrata Manor	52	86.7
Fairmount Rest Home	2	3.3
Faithful Living	0	0.0
Gardens at Stevens	0	0.0
Garden Spot Village	0	0.0
Keystone Villa	0	0.0
Lincoln Christian Home	0	0.0
Maple Farm Nursing Center	6	10.0
Zerbe Sisters Nursing Center	0	0.0
Other	0	0.0