

Ephrata Community Ambulance Association

Monthly Operations Report

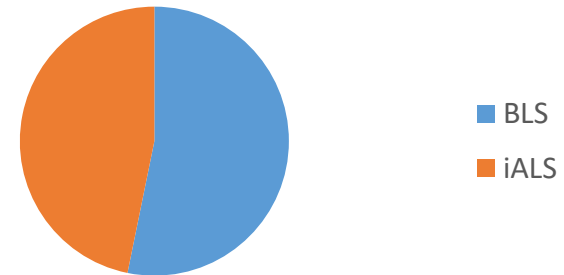
March 2025



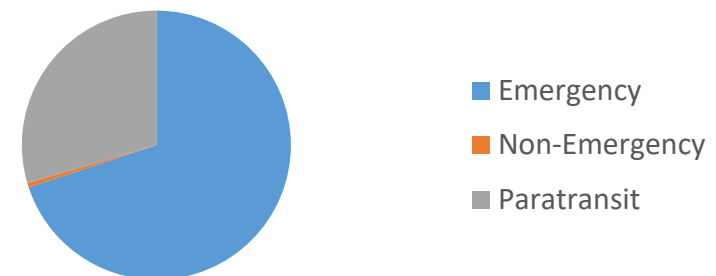
ECAA Combined Operations Report

Calls by Type	Quantity	%
Emergency	265	69.9
Basic Life Support	141	53.2
Intermediate Advanced Life Support	124	46.8
Did Not Transport	36	13.6
Call Canceled	40	15.1
Non-Emergency	2	0.5
Transports	2	100.0
Standbys	0	0.0
Paratransit	112	29.6
Total Calls	379	

Emergency Calls

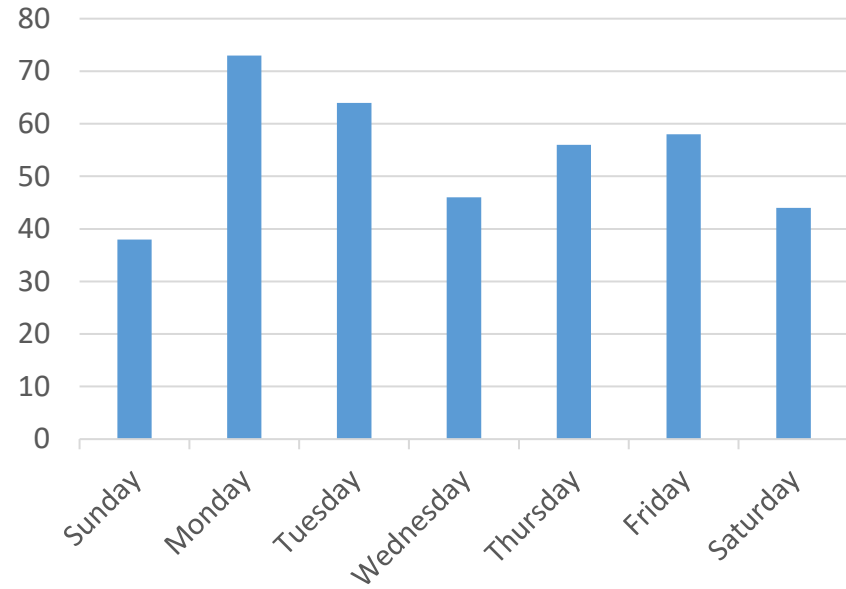


Calls by Type

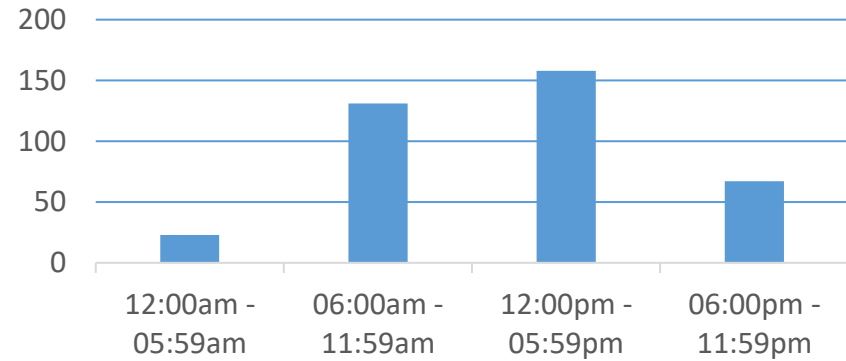


Time in Service = 318 hours and 42 minutes

Calls by Day of Week	Quantity	%
Sunday	38	10.0
Monday	73	19.3
Tuesday	64	16.9
Wednesday	46	12.1
Thursday	56	14.8
Friday	58	15.3
Saturday	44	11.6



Calls by Time of Day	Quantity	%
12:00am – 05:59am	23	6.1
06:00am – 11:59am	131	34.6
12:00pm – 05:59pm	158	41.7
06:00pm – 11:59pm	67	17.7



Call Locations by Municipality	Quantity	%
Akron Borough	28	7.4
Clay Township	26	6.9
Earl Township	1	0.3
East Cocalico Township	3	0.8
Ephrata Borough	158	41.7
Ephrata Township	109	28.8
West Cocalico Township	1	0.3
West Earl Township	12	3.2
Other	41	10.8

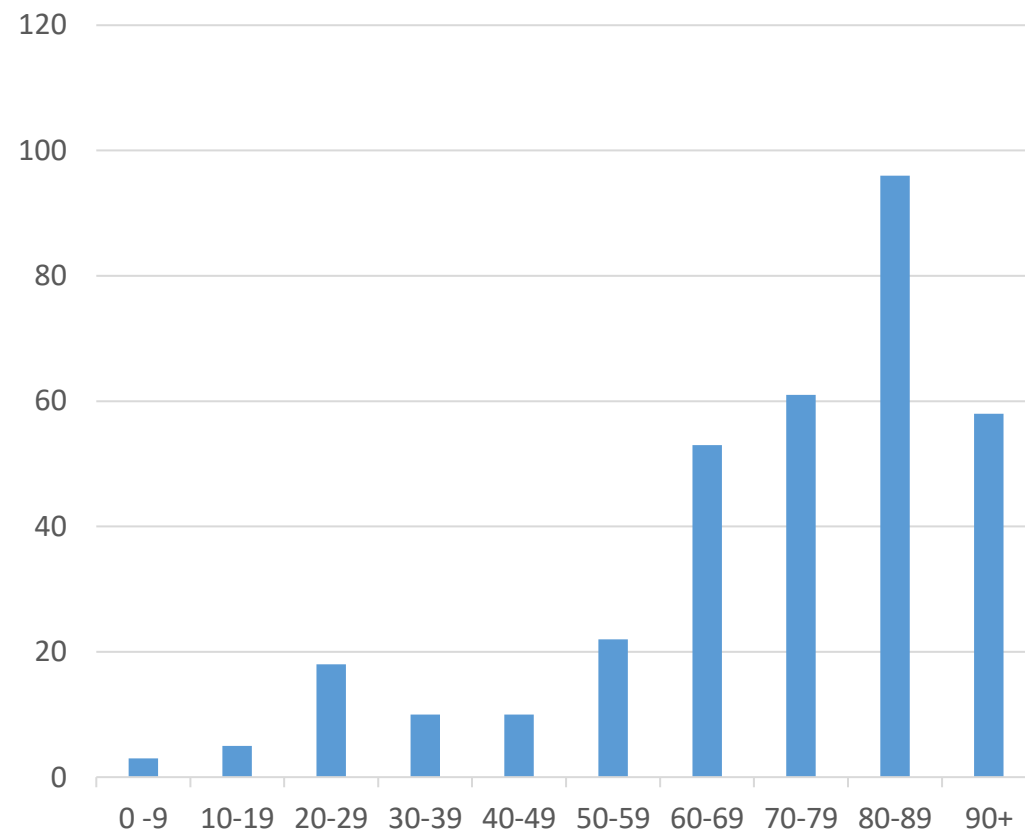
Ambulance Units	Mileage	%
Ambulance #1	796	32.0
Ambulance #2	1287	51.7
Ambulance #3	405	16.3
Ambulances Total	2488	

Paratransit Vans	Mileage	%
Van #1	53	3.6
Van #2	310	21.1
Van #3	1109	75.3
Vans Total	1472	

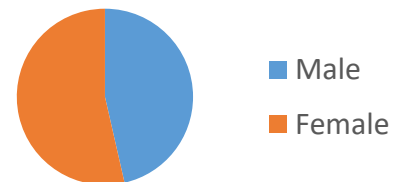
Squad Vehicle	134
----------------------	------------

ECAA Totals	4094
--------------------	-------------

Age of Patients	Quantity	%
Newborn – 9	3	0.9
10 – 19	5	1.5
20 – 29	18	5.4
30 – 39	10	3.0
40 – 49	10	3.0
50 – 59	22	6.5
60 – 69	53	15.8
70 – 79	61	18.2
80 – 89	96	28.6
90 and over	58	17.3



Gender of Patient	Quantity	%
Male	156	46.4
Female	180	53.6



Crew Structures	Quantity	%
Paid	339	89.4
Volunteer	5	1.3
Paid / Vol Combination	35	9.2

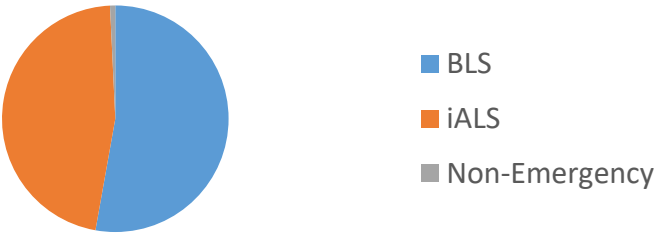


EMS Operations Report

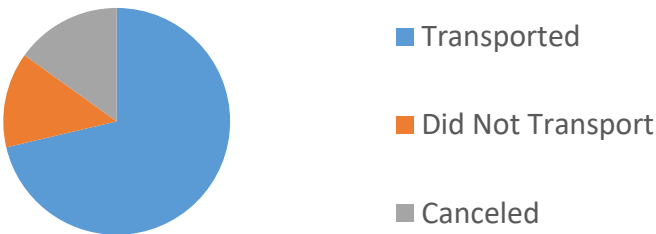


Calls by Type	Quantity	%
Emergency	265	99.3
Basic Life Support	141	53.2
Intermediate Advanced Life Support	124	46.8
Did Not Transport	36	13.6
Call Canceled	40	15.1
Non-Emergency	2	0.7
Transports	2	100.0
Standbys	0	0.0
Total Calls	267	

Calls by Type

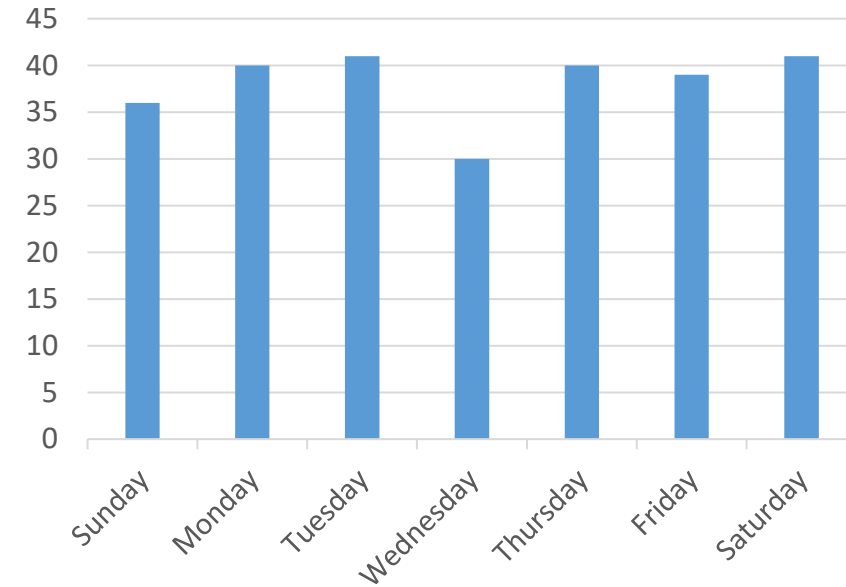


Emergencies by Transport Type

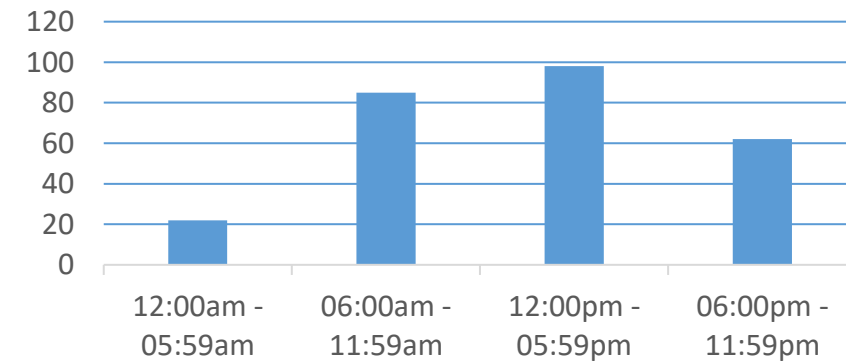


Time in Service = 212 hours and 24 minutes

Calls by Day of Week	Quantity	%
Sunday	36	13.5
Monday	40	15.0
Tuesday	41	15.4
Wednesday	30	11.2
Thursday	40	15.0
Friday	39	14.6
Saturday	41	15.4



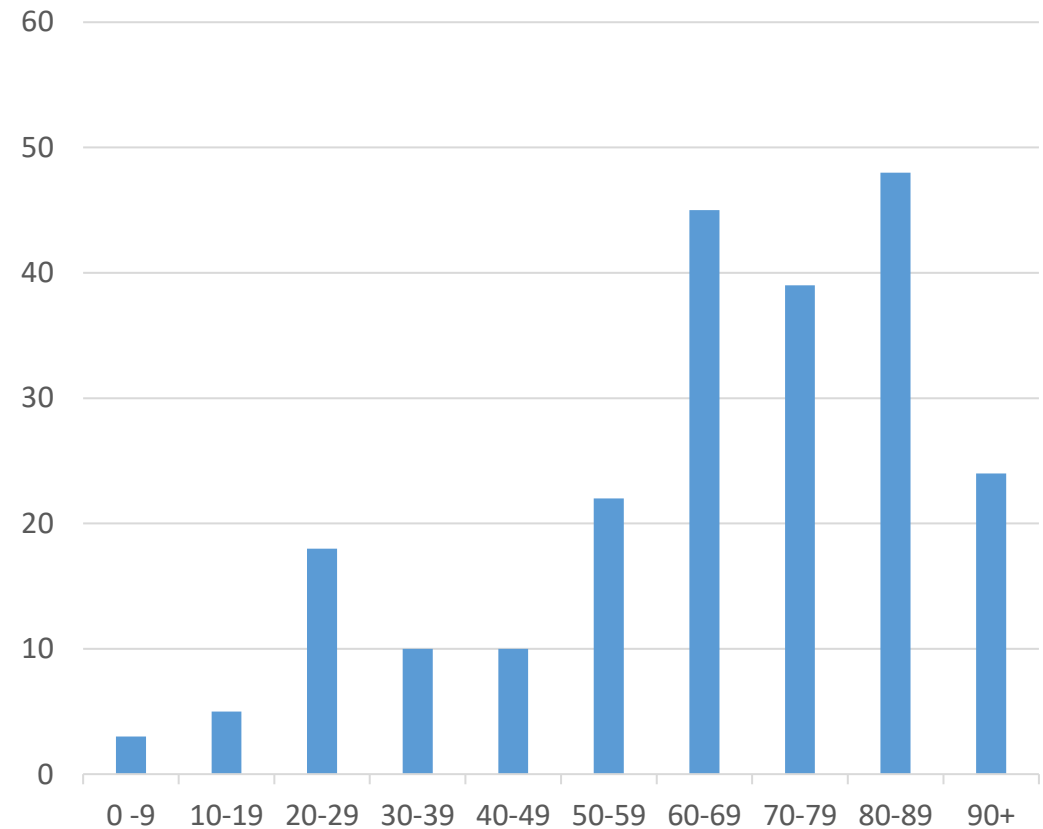
Calls by Time of Day	Quantity	%
12:00am – 05:59am	22	8.2
06:00am – 11:59am	85	31.8
12:00pm – 05:59pm	98	36.7
06:00pm – 11:59pm	62	23.2



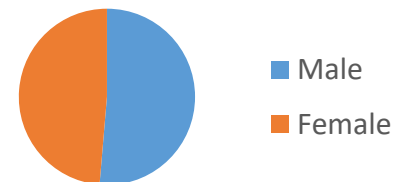
Call Locations by Municipality	Quantity	%
Akron Borough	28	10.5
Clay Township	26	9.7
Earl Township	1	0.4
East Cocalico Township	3	1.1
Ephrata Borough	117	43.8
Ephrata Township	68	25.5
West Cocalico Township	1	0.4
West Earl Township	8	3.0
Other	15	5.6

Call Locations by Location Type	Quantity	%
Residences	143	53.6
WellSpan ECH	4	1.5
Other Hospitals	0	0.0
WellSpan Urgent Care	2	0.7
LGH Urgent Care	4	1.5
Extended Care Facilities	36	13.5
Doctors Offices	21	7.9
Retail Stores	15	5.6
Other Businesses	11	4.1
Schools	1	0.4
Highways / Streets	19	7.1
Recreation Sites	2	0.7
Other Public Places	2	0.7
Other	7	2.6

Age of Patients	Quantity	%
Newborn – 9	3	1.3
10 – 19	5	2.2
20 – 29	18	8.0
30 – 39	10	4.5
40 – 49	10	4.5
50 – 59	22	9.8
60 – 69	45	20.1
70 – 79	39	17.4
80 – 89	48	21.4
90 and over	24	10.7



Gender of Patient	Quantity	%
Male	115	51.3
Female	109	48.7

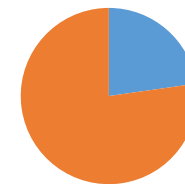


Ambulance Crews	Responses	%	Ambulance Units	Mileage	%
First crew	182	68.2	Ambulance #1	796	32.0
Second crew	82	30.7	Ambulance #2	1287	51.7
Third crew	3	1.1	Ambulance #3	405	16.3
Ambulances Total	267		Total	2488	

Squad Vehicle	2	134
----------------------	----------	------------

EMS Totals	267	2622
-------------------	------------	-------------

Transport Modes	Quantity
With emergency lights and sirens	43
No emergency lights and sirens	146



- With
lights/sirens
- No
lights/sirens

Destination Hospitals	Quantity	%
WellSpan Ephrata Community Hospital	139	73.5
WellSpan Good Samaritan Hospital	0	0.0
WellSpan York Hospital	0	0.0
Lancaster General Hospital	36	19.0
Penn State Health Lancaster Medical Center	2	1.1
UPMC Pinnacle Lititz	3	1.6
Reading Hospital & Medical Center	1	0.5
Penn State Hershey Medical Center	0	0.0
Lebanon VA Hospital	0	0.0
Helicopter Landing Zone	1	0.5
Other	7	3.7

Calls Assisted by Paramedics	Quantity	%
Medic 04-10/20	123	91.1
Medic 04-30	3	2.2
Medic 04-40	4	3.0
Medic 85	5	3.7
Medic 86	0	0.0
Medic 82	0	0.0
Medic 06	0	0.0
Total	135	

Calls Assisted by Fire Departments	Quantity
Station 12 (Akron)	3
Station 14 (Durlach/Mt. Airy)	1
Station 15 (Ephrata)	12
Station 16 (Lincoln)	7
Station 19 (Schoeneck)	0
Station 29 (West Earl)	2
Station 35 (Farmersville)	2
Other Stations	3

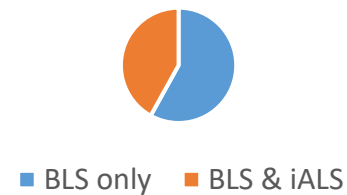
Calls with non-ECAA BLS units	Quantity	%
Assisting non-ECAA BLS units	2	0.8
Covering for non-ECAA BLS units	25	9.4
Assisted by non-ECAA BLS units	1	0.4
Covered by non-ECAA BLS units	12	4.5

Calls Assisted by Police Departments	Quantity	%
Ephrata PD	36	67.9
West Earl PD	14	26.4
Northern Lancaster Regional PD	3	5.7
East Cocalico PD	0	0.0
New Holland PD	0	0.0
PA State Police	0	0.0

iALS Call Outcomes	Quantity	%
BLS Treatment	72	58.1
BLS & iALS treatment	52	41.9

Crew Structures	Quantity	%
Paid	230	86.1
Volunteer	3	1.1
Paid / Vol Combination	34	12.7

iALS Call Outcomes



Type of Emergency	Quantity	%
Abrasion/Laceration	7	2.6
Burns	0	0.0
Cardiac Arrest	8	3.0
Cardiac Symptoms	27	10.2
Choking	0	0.0
CVA (Stroke)	9	3.4
Diabetic	7	2.6
Difficult breathing	25	9.4
DOA	0	0.0
Emergency transfer	1	0.4
Emotional problem	8	3.0
Fall victim	51	19.2
Fire call	4	1.5
Fracture/Injury	7	2.6

Type of Emergency	Quantity	%
Hemorrhaging	5	1.9
Maternity	1	0.4
MVA – Motorcycle	0	0.0
MVA – Cars/trucks	7	2.6
Nausea	9	3.4
Overdose	1	0.4
Pain	35	13.2
Pedestrian struck	2	0.8
Seizures	5	1.9
Syncope/vertigo	15	5.7
Unresponsive	5	1.9
Vomiting	11	4.2
Weakness	10	3.8
Other	5	1.9

Paratransit Operations Report

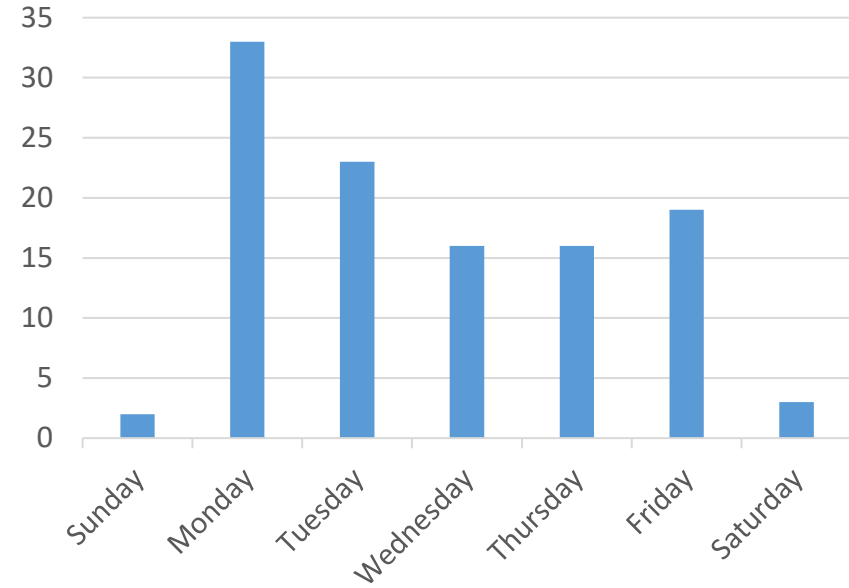
Paratransit Calls

112

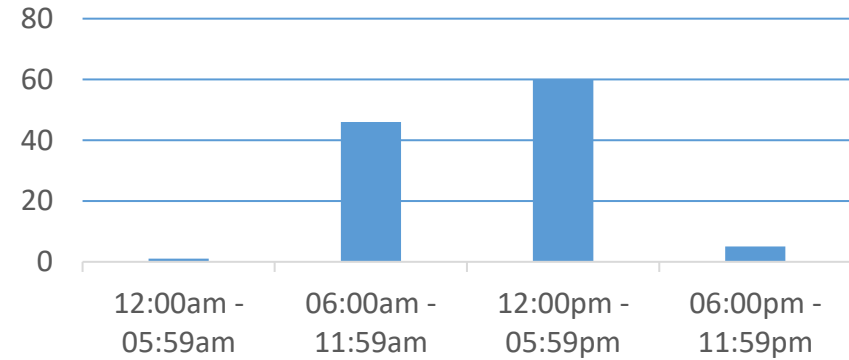


Time in Service = 106 hours and 18 minutes

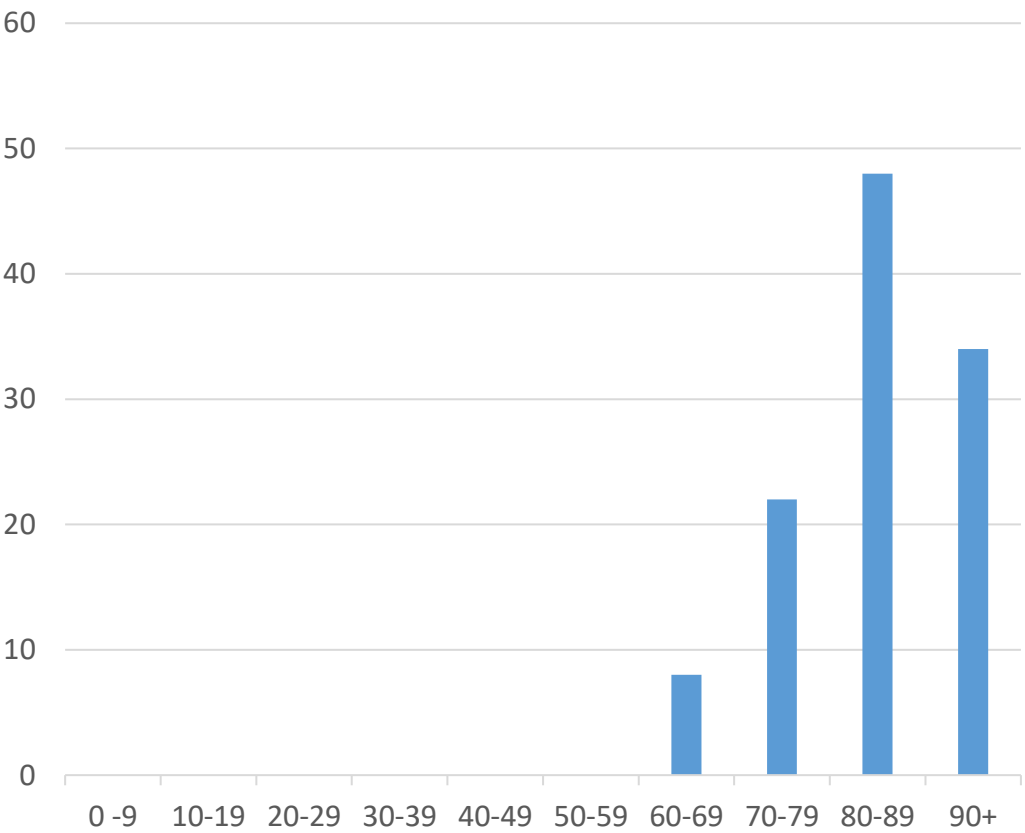
Calls by Day of Week	Quantity	%
Sunday	2	1.8
Monday	33	29.5
Tuesday	23	20.5
Wednesday	16	14.3
Thursday	16	14.3
Friday	19	17.0
Saturday	3	2.7



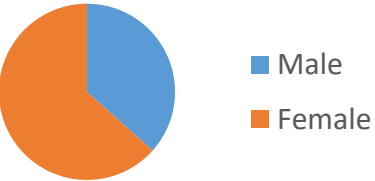
Calls by Time of Day	Quantity	%
12:00am – 05:59am	1	0.9
06:00am – 11:59am	46	41.1
12:00pm – 05:59pm	60	53.6
06:00pm – 11:59pm	5	4.5



Age of Patients	Quantity	
Newborn – 9	0	0.0
10 – 19	0	0.0
20 – 29	0	0.0
30 – 39	0	0.0
40 – 49	0	0.0
50 – 59	0	0.0
60 – 69	8	7.1
70 – 79	22	19.6
80 – 89	48	42.9
90 and over	34	30.4

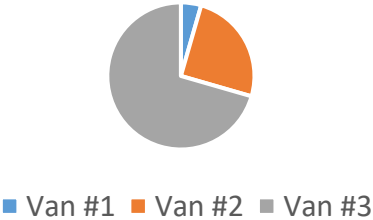


Gender of Patient	Quantity	%
Male	41	36.6
Female	71	63.4



Paratransit Vans	Calls	%	Mileage	%
Van #1	5	4.5	53	3.6
Van #2	28	25.0	310	21.1
Van #3	79	70.5	1109	75.3
Vans Total	112		1472	

Calls by Vehicle



Call Locations by Municipality	Quantity	%
Akron Borough	0	0.0
Clay Township	0	0.0
Earl Township	0	0.0
East Cocalico Township	0	0.0
Ephrata Borough	41	36.6
Ephrata Township	41	36.6
West Cocalico Township	0	0.0
West Earl Township	4	3.6
Other	26	23.2

Crew Structures	Quantity	%
Paid	109	97.3
Volunteer	2	1.8
Paid / Vol Combination	1	0.9

Call Locations by Location Type	Quantity	%
Residences	1	0.9
WellSpan ECH	30	26.8
Lancaster General Hospital	4	3.6
LGH Health Campus	8	7.1
Other Hospitals	3	2.7
Extended Care Facilities	38	33.9
Doctors Offices	28	25.0
Other	0	0.0

ECF Origins/Destinations	Quantity	%
Ephrata Manor	60	88.2
Fairmount Rest Home	4	5.9
Faithful Living	0	0.0
Gardens at Stevens	0	0.0
Garden Spot Village	0	0.0
Keystone Villa	0	0.0
Lincoln Christian Home	0	0.0
Maple Farm Nursing Center	4	5.9
Zerbe Sisters Nursing Center	0	0.0
Other	0	0.0