

Ephrata Community Ambulance Association

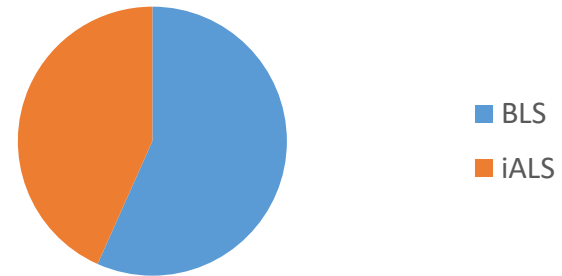
Monthly Operations Report
September 2024



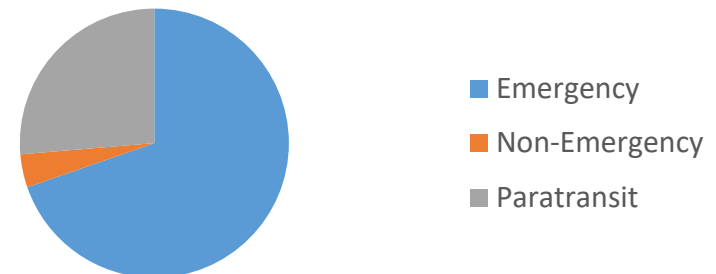
ECAA Combined Operations Report

| Calls by Type | Quantity | % |
|------------------------------------|------------|------|
| Emergency | 262 | 69.2 |
| Basic Life Support | 157 | 73.6 |
| Intermediate Advanced Life Support | 120 | 29.5 |
| Did Not Transport | 22 | 10.5 |
| Call Canceled | 16 | 9.5 |
| Non-Emergency | 15 | 2.2 |
| Transports | 6 | 71.4 |
| Standbys | 9 | 28.6 |
| Paratransit | 99 | 28.6 |
| Total Calls | 376 | |

Emergency Calls

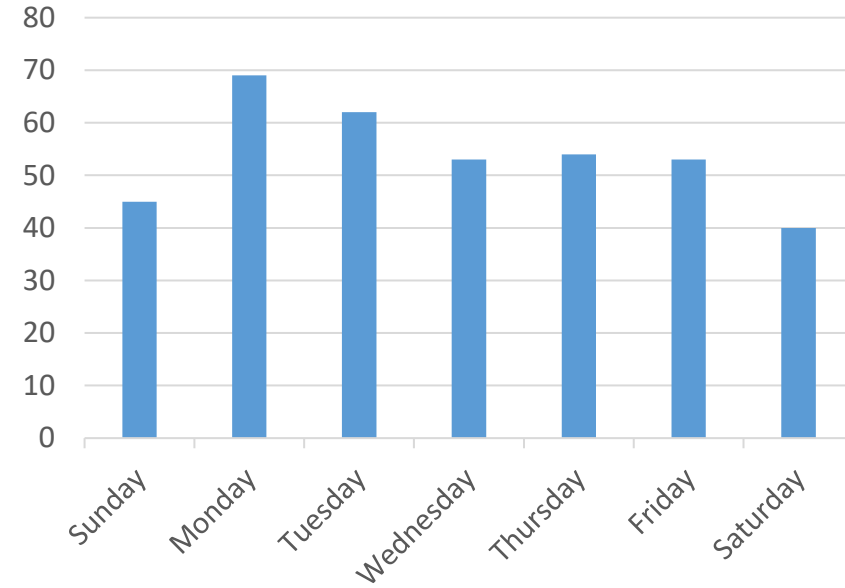


Calls by Type

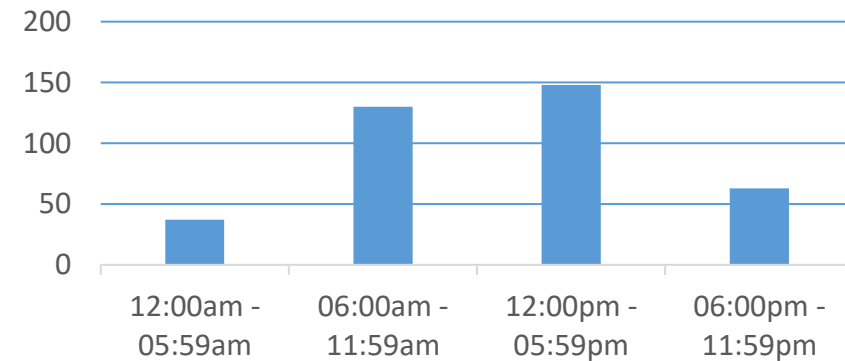


Time in Service = 357 hours and 11 minutes

| Calls by Day of Week | Quantity | % |
|----------------------|----------|------|
| Sunday | 45 | 12.0 |
| Monday | 69 | 18.4 |
| Tuesday | 62 | 16.5 |
| Wednesday | 53 | 14.1 |
| Thursday | 54 | 14.4 |
| Friday | 53 | 14.1 |
| Saturday | 40 | 10.6 |



| Calls by Time of Day | Quantity | % |
|----------------------|----------|------|
| 12:00am – 05:59am | 37 | 9.8 |
| 06:00am – 11:59am | 130 | 34.6 |
| 12:00pm – 05:59pm | 146 | 38.8 |
| 06:00pm – 11:59pm | 63 | 16.8 |



| Call Locations by Municipality | Quantity | % |
|--------------------------------|----------|------|
| Akron Borough | 19 | 5.1 |
| Clay Township | 17 | 4.5 |
| Earl Township | 0 | 0.0 |
| East Cocalico Township | 5 | 1.3 |
| Ephrata Borough | 173 | 46.0 |
| Ephrata Township | 123 | 32.7 |
| West Cocalico Township | 4 | 1.1 |
| West Earl Township | 17 | 4.5 |
| Other | 18 | 4.8 |

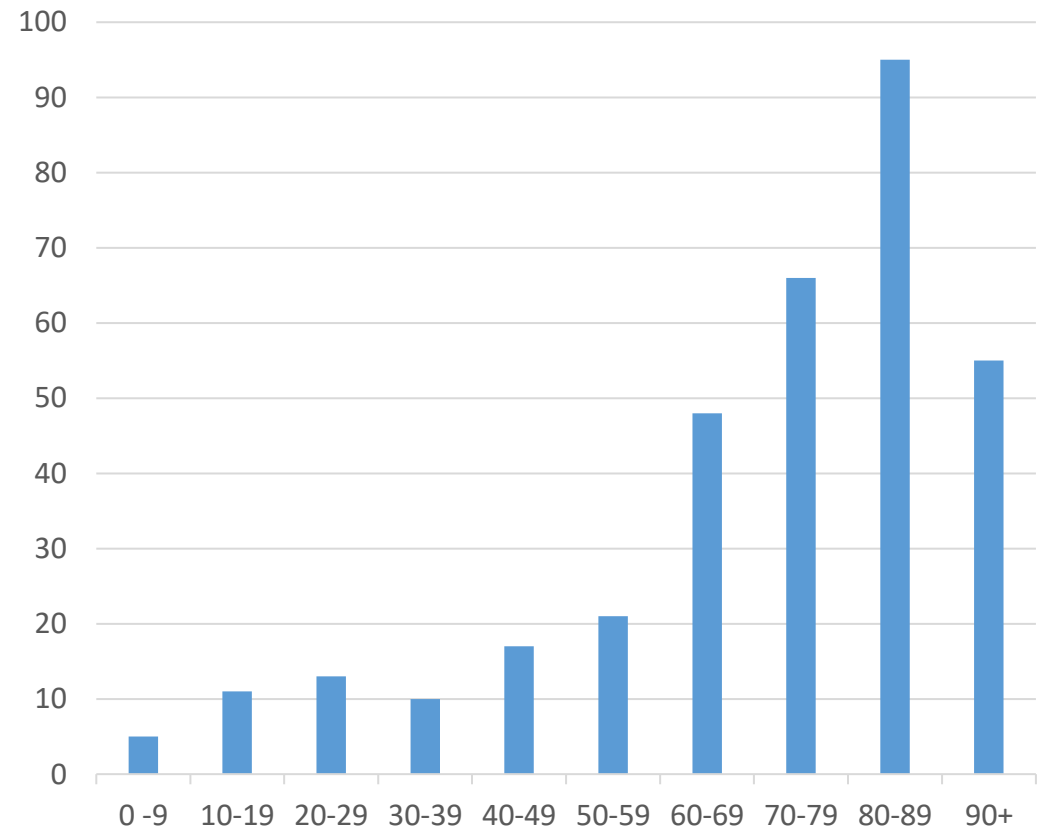
| Ambulance Units | Mileage | % |
|-------------------------|-------------|------|
| Ambulance #1 | 847 | 30.8 |
| Ambulance #2 | 1481 | 53.8 |
| Ambulance #3 | 424 | 15.4 |
| Ambulances Total | 2752 | |

| Paratransit Vans | Mileage | % |
|-------------------|-------------|------|
| Van #1 | 52 | 4.7 |
| Van #2 | 183 | 16.4 |
| Van #3 | 879 | 78.9 |
| Vans Total | 1114 | |

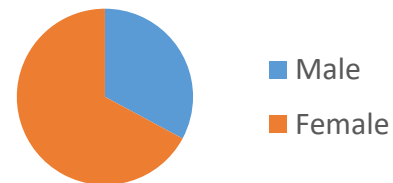
| | |
|----------------------|------------|
| Squad Vehicle | 132 |
|----------------------|------------|

| | |
|--------------------|-------------|
| ECAA Totals | 3998 |
|--------------------|-------------|

| Age of Patients | Quantity | % |
|-----------------|----------|------|
| Newborn – 9 | 5 | 1.5 |
| 10 – 19 | 11 | 3.2 |
| 20 – 29 | 13 | 3.8 |
| 30 – 39 | 10 | 2.9 |
| 40 – 49 | 17 | 5.0 |
| 50 – 59 | 21 | 6.2 |
| 60 – 69 | 48 | 14.1 |
| 70 – 79 | 66 | 19.4 |
| 80 – 89 | 95 | 27.9 |
| 90 and over | 55 | 16.1 |



| Gender of Patient | Quantity | % |
|-------------------|----------|------|
| Male | 112 | 32.8 |
| Female | 229 | 67.2 |



| Crew Structures | Quantity | % |
|------------------------|----------|------|
| Paid | 317 | 84.3 |
| Volunteer | 17 | 4.5 |
| Paid / Vol Combination | 42 | 11.2 |

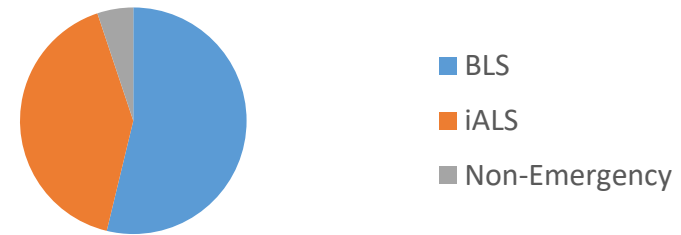


EMS Operations Report

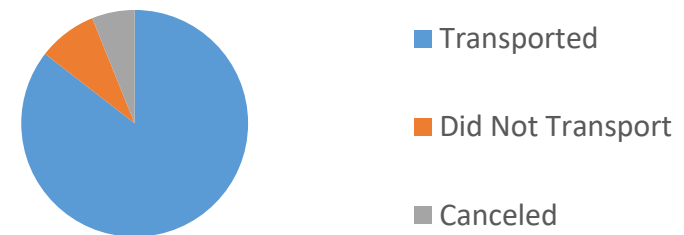


| Calls by Type | Quantity | % |
|------------------------------------|------------|------|
| Emergency | 262 | 94.6 |
| Basic Life Support | 157 | 59.9 |
| Intermediate Advanced Life Support | 120 | 45.8 |
| Did Not Transport | 22 | 8.4 |
| Call Canceled | 16 | 6.1 |
| Non-Emergency | 15 | 5.4 |
| Transports | 6 | 40.0 |
| Standbys | 9 | 60.0 |
| Total Calls | 277 | |

Calls by Type

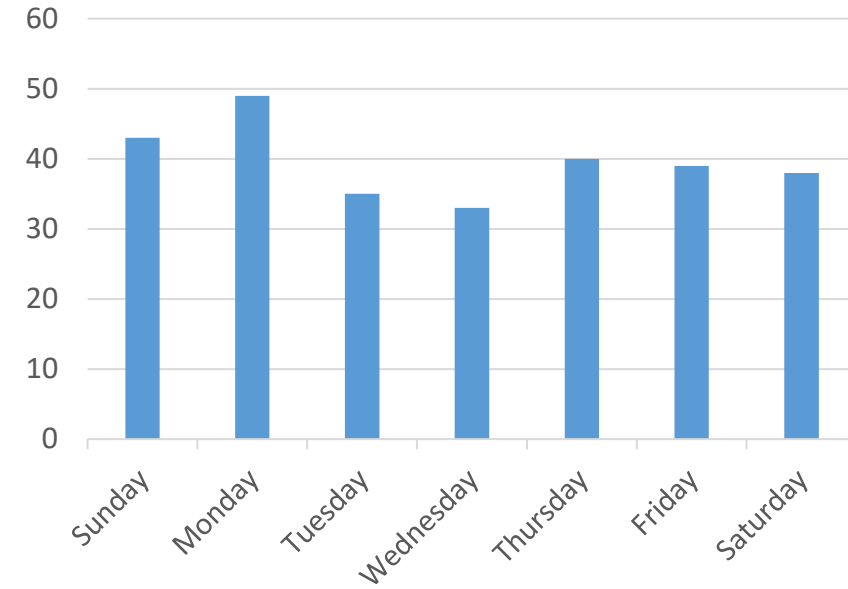


Emergencies by Transport Type

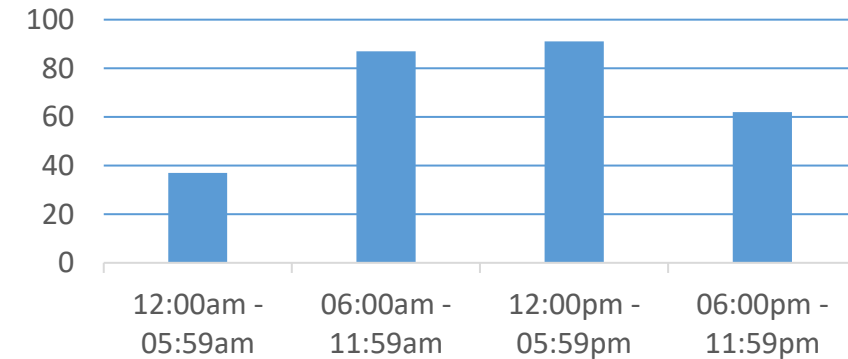


Time in Service = 2774 hours and 35 minutes

| Calls by Day of Week | Quantity | % |
|----------------------|----------|------|
| Sunday | 43 | 15.5 |
| Monday | 49 | 17.7 |
| Tuesday | 35 | 12.6 |
| Wednesday | 33 | 11.9 |
| Thursday | 40 | 14.4 |
| Friday | 39 | 14.1 |
| Saturday | 38 | 13.7 |



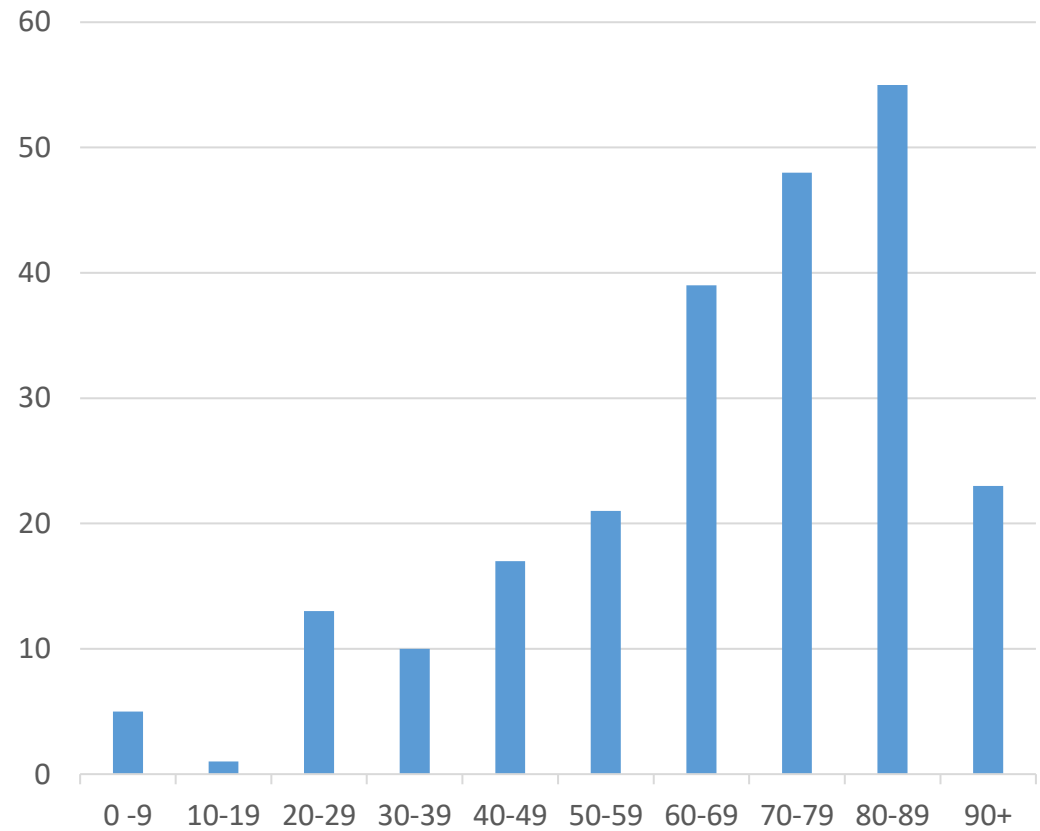
| Calls by Time of Day | Quantity | % |
|----------------------|----------|------|
| 12:00am – 05:59am | 37 | 13.4 |
| 06:00am – 11:59am | 87 | 31.4 |
| 12:00pm – 05:59pm | 91 | 32.9 |
| 06:00pm – 11:59pm | 62 | 22.4 |



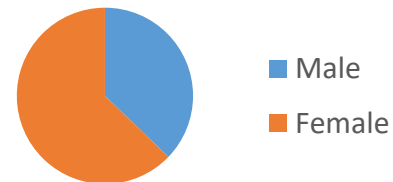
| Call Locations by Municipality | Quantity | % |
|--------------------------------|----------|------|
| Akron Borough | 19 | 6.9 |
| Clay Township | 16 | 5.8 |
| Earl Township | 0 | 0.0 |
| East Cocalico Township | 0 | 0.0 |
| Ephrata Borough | 135 | 48.7 |
| Ephrata Township | 83 | 30.0 |
| West Cocalico Township | 4 | 1.4 |
| West Earl Township | 13 | 4.7 |
| Other | 7 | 2.5 |

| Call Locations by Location Type | Quantity | % |
|---------------------------------|----------|------|
| Residences | 133 | 48.0 |
| WellSpan ECH | 7 | 2.5 |
| Other Hospitals | 0 | 0.0 |
| WellSpan Urgent Care | 3 | 1.1 |
| LGH Urgent Care | 4 | 1.4 |
| Extended Care Facilities | 46 | 16.6 |
| Doctors Offices | 18 | 6.5 |
| Retail Stores | 20 | 7.2 |
| Other Businesses | 5 | 1.8 |
| Schools | 6 | 2.2 |
| Highways / Streets | 32 | 11.6 |
| Recreation Sites | 2 | 0.7 |
| Other Public Places | 1 | 0.4 |
| Other | 0 | 0.0 |

| Age of Patients | Quantity | % |
|-----------------|----------|------|
| Newborn – 9 | 5 | 2.1 |
| 10 – 19 | 1 | 4.5 |
| 20 – 29 | 13 | 5.4 |
| 30 – 39 | 10 | 4.1 |
| 40 – 49 | 17 | 7.0 |
| 50 – 59 | 21 | 8.7 |
| 60 – 69 | 39 | 16.1 |
| 70 – 79 | 48 | 19.8 |
| 80 – 89 | 55 | 22.7 |
| 90 and over | 23 | 9.5 |



| Gender of Patient | Quantity | % |
|-------------------|----------|------|
| Male | 90 | 37.2 |
| Female | 152 | 62.8 |

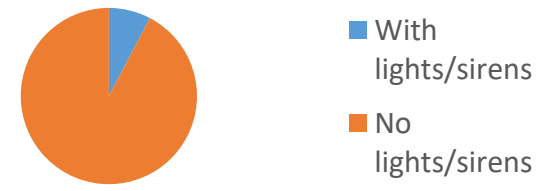


| Ambulance Crews | Responses | % | Ambulance Units | Mileage | % |
|-------------------------|------------|------|-----------------|-------------|------|
| First crew | 211 | 76.2 | Ambulance #1 | 847 | 30.8 |
| Second crew | 60 | 21.7 | Ambulance #2 | 1481 | 53.8 |
| Third crew | 6 | 2.2 | Ambulance #3 | 424 | 15.4 |
| Ambulances Total | 277 | | Total | 2752 | |

| | | |
|----------------------|----------|------------|
| Squad Vehicle | 0 | 132 |
|----------------------|----------|------------|

| | | |
|-------------------|------------|-------------|
| EMS Totals | 277 | 2884 |
|-------------------|------------|-------------|

| Transport Modes | Quantity |
|----------------------------------|----------|
| With emergency lights and sirens | 17 |
| No emergency lights and sirens | 203 |



| Destination Hospitals | Quantity | % |
|--|----------|------|
| WellSpan Ephrata Community Hospital | 163 | 74.1 |
| WellSpan Good Samaritan Hospital | 0 | 0.0 |
| WellSpan York Hospital | 0 | 0.0 |
| Lancaster General Hospital | 44 | 20.0 |
| Penn State Health Lancaster Medical Center | 0 | 0.0 |
| UPMC Pinnacle Lititz | 4 | 1.8 |
| Reading Hospital & Medical Center | 2 | 0.9 |
| Penn State Hershey Medical Center | 0 | 0.0 |
| Lebanon VA Hospital | 0 | 0.0 |
| Helicopter Landing Zone | 0 | 0.0 |
| Other | 7 | 3.2 |

| Calls Assisted by Paramedics | Quantity | % |
|------------------------------|------------|------|
| Medic 04-10/20 | 106 | 88.3 |
| Medic 04-30 | 5 | 4.2 |
| Medic 04-40 | 4 | 3.3 |
| Medic 85 | 4 | 3.3 |
| Medic 86 | 0 | 0.0 |
| Medic 82 | 0 | 0.0 |
| Medic 06 | 1 | 0.8 |
| Total | 120 | |

| Calls Assisted by Fire Departments | Quantity |
|------------------------------------|----------|
| Station 12 (Akron) | 6 |
| Station 14 (Durlach/Mt. Airy) | 1 |
| Station 15 (Ephrata) | 16 |
| Station 16 (Lincoln) | 12 |
| Station 19 (Schoeneck) | 7 |
| Station 29 (West Earl) | 4 |
| Station 35 (Farmersville) | 2 |
| Other Stations | 3 |

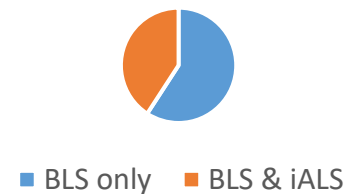
| Calls with non-ECAA BLS units | Quantity | % |
|---------------------------------|----------|------|
| Assisting non-ECAA BLS units | 5 | 1.9 |
| Covering for non-ECAA BLS units | 12 | 4.6 |
| Assisted by non-ECAA BLS units | 4 | 1.5 |
| Covered by non-ECAA BLS units | 48 | 18.3 |

| Calls Assisted by Police Departments | Quantity | % |
|--------------------------------------|----------|------|
| Ephrata PD | 57 | 75.0 |
| West Earl PD | 15 | 19.7 |
| Northern Lancaster Regional PD | 1 | 1.3 |
| East Cocalico PD | 0 | 0.0 |
| Earl Twp | 0 | 0.0 |
| PA State Police | 3 | 3.9 |

| Crew Structures | Quantity | % |
|------------------------|----------|------|
| Paid | 220 | 79.4 |
| Volunteer | 15 | 5.4 |
| Paid / Vol Combination | 42 | 15.2 |

| iALS Call Outcomes | Quantity | % |
|----------------------|----------|------|
| BLS Treatment | 71 | 59.2 |
| BLS & iALS treatment | 49 | 40.8 |

iALS Call Outcomes



| Type of Emergency | Quantity | % |
|---------------------|----------|------|
| Abrasion/Laceration | 4 | 1.5 |
| Burns | 0 | 0.0 |
| Cardiac Arrest | 3 | 1.1 |
| Cardiac Symptoms | 18 | 6.9 |
| Choking | 1 | 0.4 |
| CVA (Stroke) | 4 | 1.5 |
| Diabetic | 1 | 0.4 |
| Difficult breathing | 27 | 10.3 |
| DOA | 1 | 0.4 |
| Emergency transfer | 0 | 0.0 |
| Emotional problem | 6 | 2.3 |
| Fall victim | 50 | 19.1 |
| Fire call | 2 | 0.8 |
| Fracture/Injury | 8 | 3.1 |

| Type of Emergency | Quantity | % |
|-------------------|----------|-----|
| Hemorrhaging | 4 | 1.5 |
| Maternity | 0 | 0.0 |
| MVA – Motorcycle | 2 | 0.8 |
| MVA – Cars/trucks | 19 | 7.3 |
| Nausea | 20 | 7.6 |
| Overdose | 2 | 0.8 |
| Pain | 15 | 5.7 |
| Pedestrian struck | 1 | 0.4 |
| Seizures | 7 | 2.7 |
| Syncope/vertigo | 9 | 3.4 |
| Unresponsive | 10 | 3.8 |
| Vomiting | 15 | 5.7 |
| Weakness | 20 | 7.6 |
| Other | 13 | 5.0 |

Paratransit Operations Report

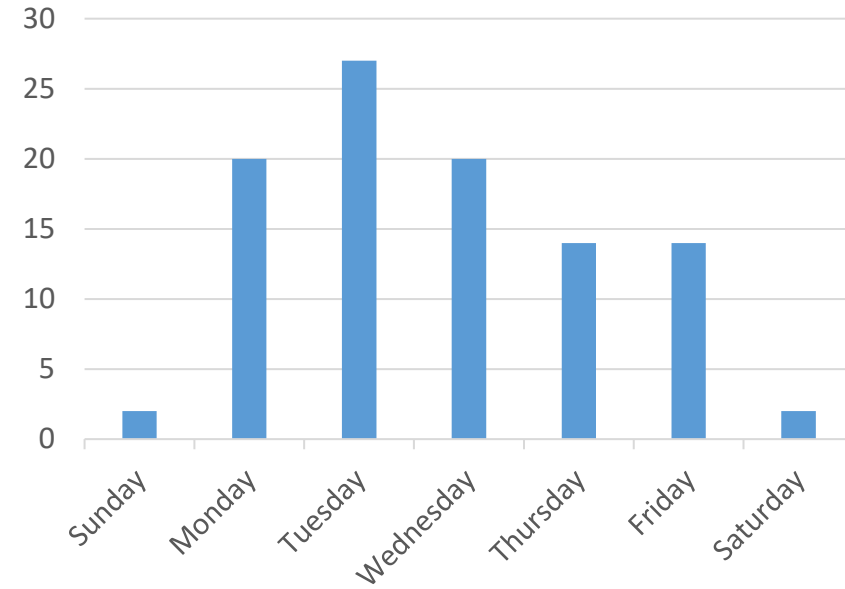
Paratransit Calls

99

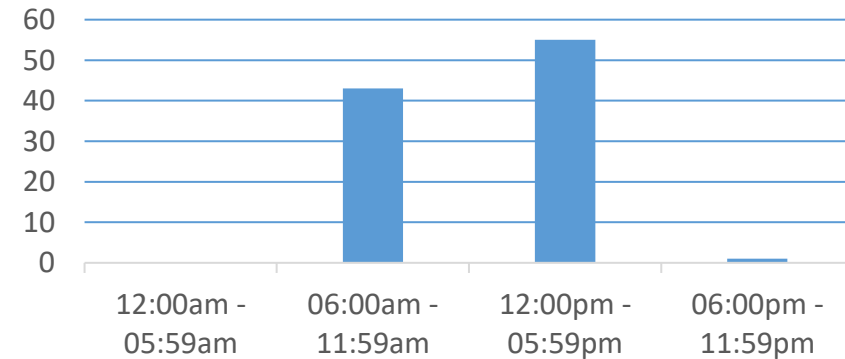


Time in Service = 82 hours and 36 minutes

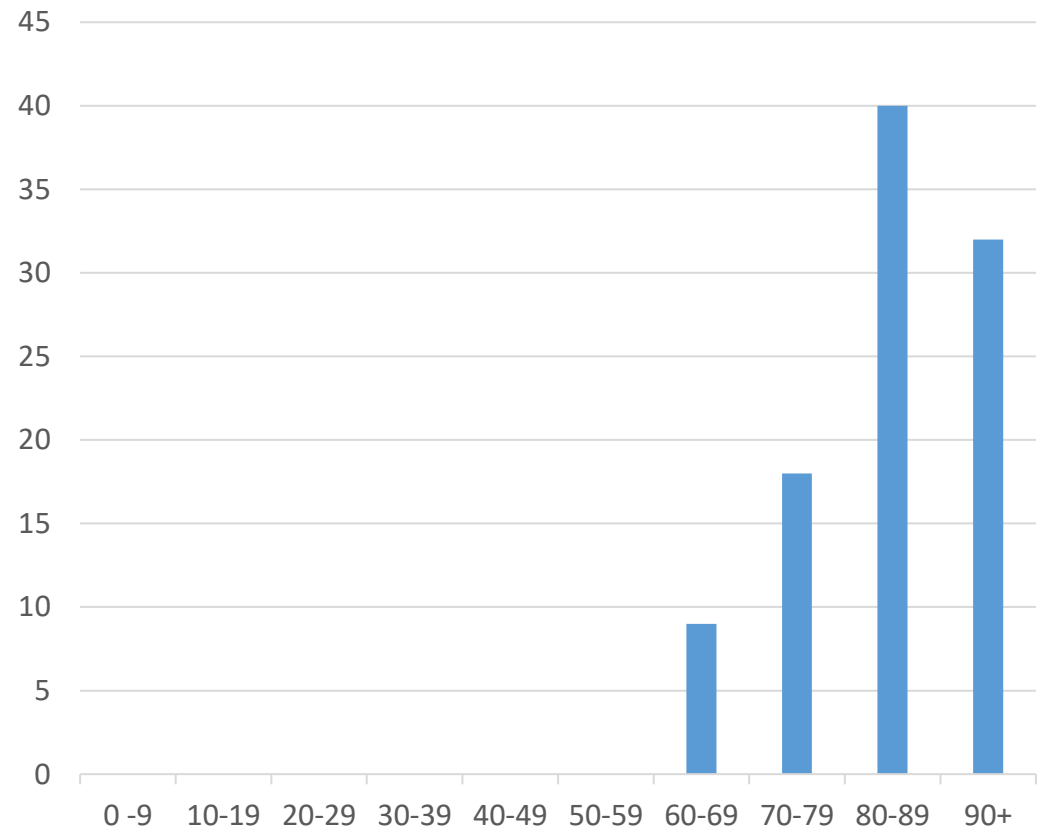
| Calls by Day of Week | Quantity | % |
|----------------------|----------|------|
| Sunday | 2 | 2.0 |
| Monday | 20 | 20.2 |
| Tuesday | 27 | 27.3 |
| Wednesday | 20 | 20.2 |
| Thursday | 14 | 14.1 |
| Friday | 14 | 14.1 |
| Saturday | 2 | 2.0 |



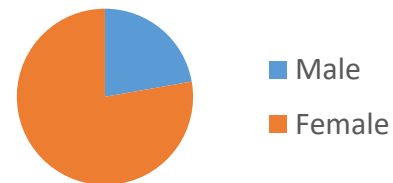
| Calls by Time of Day | Quantity | % |
|----------------------|----------|------|
| 12:00am – 05:59am | 0 | 0.0 |
| 06:00am – 11:59am | 43 | 43.4 |
| 12:00pm – 05:59pm | 55 | 55.6 |
| 06:00pm – 11:59pm | 1 | 1.0 |



| Age of Patients | Quantity | % |
|-----------------|----------|------|
| Newborn – 9 | 0 | 0.0 |
| 10 – 19 | 0 | 0.0 |
| 20 – 29 | 0 | 0.0 |
| 30 – 39 | 0 | 0.0 |
| 40 – 49 | 0 | 0.0 |
| 50 – 59 | 0 | 0.0 |
| 60 – 69 | 9 | 9.1 |
| 70 – 79 | 18 | 18.2 |
| 80 – 89 | 40 | 40.4 |
| 90 and over | 32 | 32.3 |



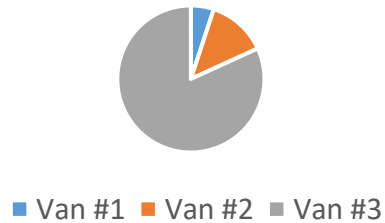
| Gender of Patient | Quantity | % |
|-------------------|----------|------|
| Male | 22 | 22.2 |
| Female | 77 | 77.8 |



| Paratransit Vans | Calls | % | Mileage | % |
|-------------------|-----------|------|-------------|------|
| Van #1 | 5 | 5.1 | 52 | 4.7 |
| Van #2 | 13 | 13.1 | 183 | 16.4 |
| Van #3 | 81 | 81.8 | 879 | 78.9 |
| Vans Total | 99 | | 1114 | |

| Call Locations by Municipality | Quantity | % |
|--------------------------------|----------|------|
| Akron Borough | 0 | 0.0 |
| Clay Township | 1 | 1.0 |
| Earl Township | 0 | 0.0 |
| East Cocalico Township | 5 | 5.1 |
| Ephrata Borough | 38 | 38.4 |
| Ephrata Township | 40 | 40.4 |
| West Cocalico Township | 0 | 0.0 |
| West Earl Township | 4 | 4.0 |
| Other | 11 | 11.1 |

Calls by Vehicle



| Crew Structures | Quantity | % |
|------------------------|----------|------|
| Paid | 97 | 98.0 |
| Volunteer | 2 | 2.0 |
| Paid / Vol Combination | 0 | 0.0 |

| Call Locations by Location Type | Quantity | % |
|---------------------------------|----------|------|
| Residences | 3 | 3.0 |
| WellSpan ECH | 24 | 24.2 |
| Lancaster General Hospital | 1 | 1.0 |
| LGH Health Campus | 5 | 5.1 |
| Other Hospitals | 0 | 0.0 |
| Extended Care Facilities | 37 | 37.4 |
| Doctors Offices | 29 | 29.3 |
| Other | 0 | 0.0 |

| ECF Origins/Destinations | Quantity | % |
|------------------------------|----------|------|
| Ephrata Manor | 44 | 71.0 |
| Fairmount Rest Home | 2 | 3.2 |
| Faithful Living | 0 | 0.0 |
| Gardens at Stevens | 0 | 0.0 |
| Garden Spot Village | 0 | 0.0 |
| Keystone Villa | 0 | 0.0 |
| Lincoln Christian Home | 0 | 0.0 |
| Maple Farm Nursing Center | 16 | 25.8 |
| Zerbe Sisters Nursing Center | 0 | 0.0 |
| Other | 0 | 0.0 |